

AFR  
ICA  
N

COVER

***Mariannahill***

c. 1900

Title and 396 imprinted.

Mount inscribed 297

Gelatin silver print

137 by 207 mm.

01

***Kazembe's heir***  
**1914**

Title inscribed on mount

Gelatin silver print

126 by 102 mm.



▼  
**AFR  
ICA  
N**  
▲

—  
MICHAEL  
GRAHAM-  
STEWART  
2012

02

**King Lewanika, King of  
Barotseland**

1902

Imprinted with title and  
*Photo by S... (Bulawayo)*  
Taken in the year Lewanika  
visited the UK  
Gelatin silver print  
198 by 125 mm.



03

**Portrait**

c. 1910

Gelatin silver print  
141 by 97 mm.



04

S.W. Partridge and Co. Ltd.  
(publishers)  
*Mrs Harding, who walks 30  
miles daily*

c. 1920

Title and touch-up  
instructions inscribed verso  
Gelatin silver print with  
graphite and white  
additions  
155 by 114 mm.



05

Joe Barnett (c. 1861-1897)  
*A Wedding Group*  
c. 1890  
Title imprinted  
Gelatin silver print  
203 by 150 mm.

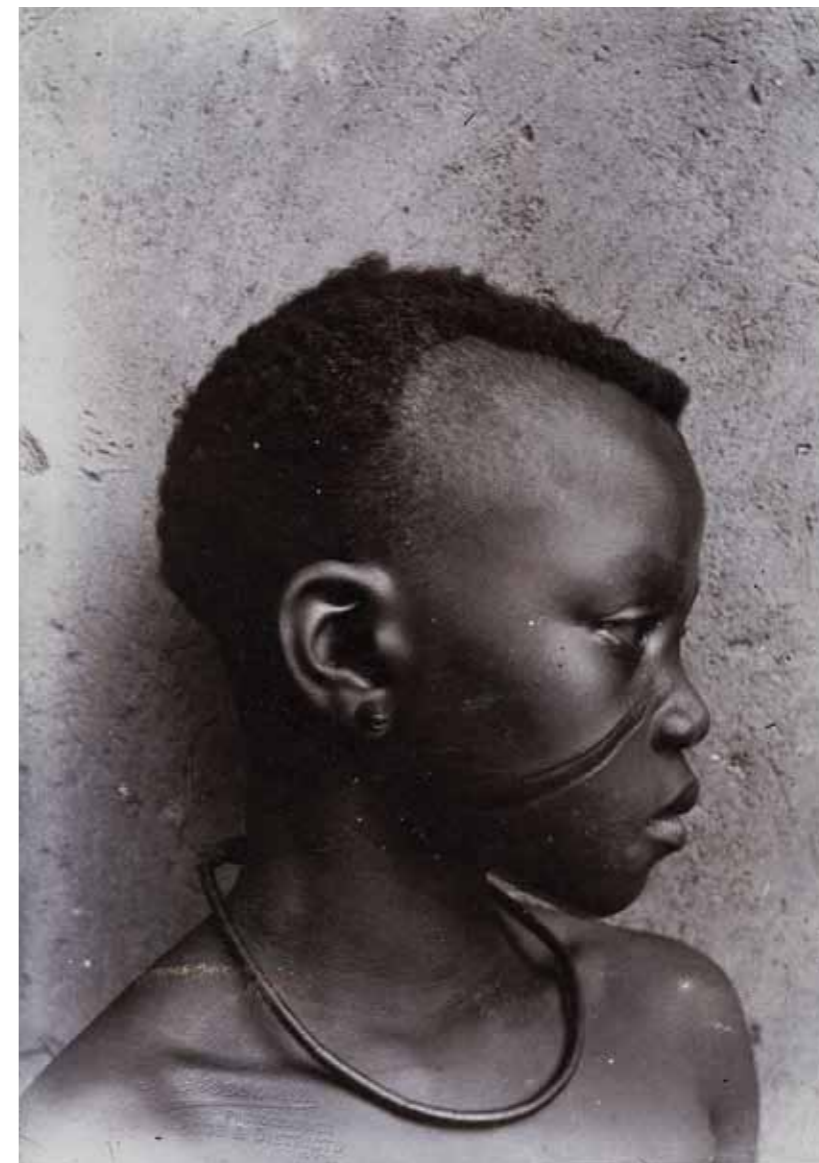


06

**H.S. Freeman  
Portrait**

c. 1930

Blind stamped *H.S.  
Freeman, Photographer,  
Lagos and District*  
Gelatin silver print  
154 by 107 mm.



07

*M....(illegible),  
Chief of Bolombo (1 of 2)  
and wife*

c. 1910

Title inscribed verso  
Gelatin silver print  
109 by 82 mm.



08

**Reverend Charles Dodds  
(1869-1934)**

**Double portrait**

c. 1900

Gelatin silver print on  
postcard stock  
88 by 139 mm.

Dodds was a Baptist  
missionary stationed at Upoto  
and Monsembe (on the  
Congo River)



09

**B.J. Kuofi  
Double portrait**

1880s

Imprinted verso with *B.J. Kuofi. Goldsmith and photographer, Gold Coast Colony* and inscribed with seasonal greeting from same sender as carte on facing page, dated 11/1/87

Albumen print,  
carte de visite  
103 by 63 mm. (overall)



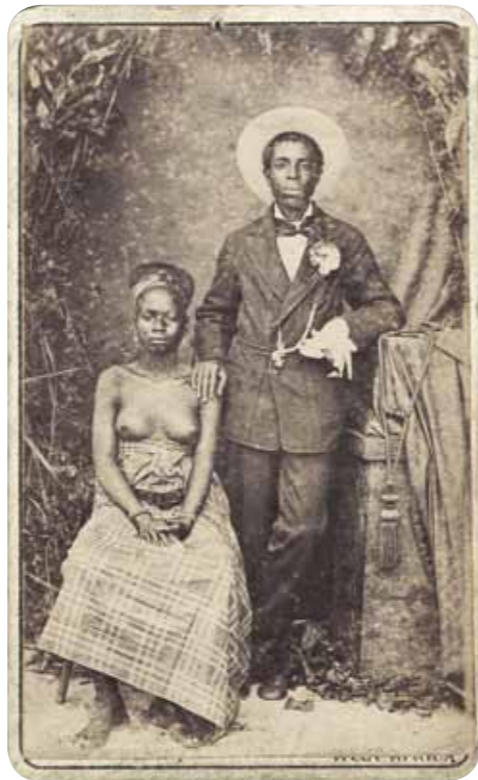
10

**John M. Blair  
Couple**

?1870s

Imprinted verso with photographer and *Chemist, photographer, architect, West Coast of Africa*

Albumen print, cdv  
103 by 62 mm. (overall)



11

**Lutterodt Brothers  
Double portrait**

1880s

Imprinted verso with photographers (also with *Cousin* erased) and inscribed with a personal message from Cape Coast dated 1. June '86

Gelatin silver print, cdv  
103 by 62 mm. (overall)



12

**Samburu**

c. 1910

Title inscribed verso  
Gelatin silver print  
173 by 82 mm.

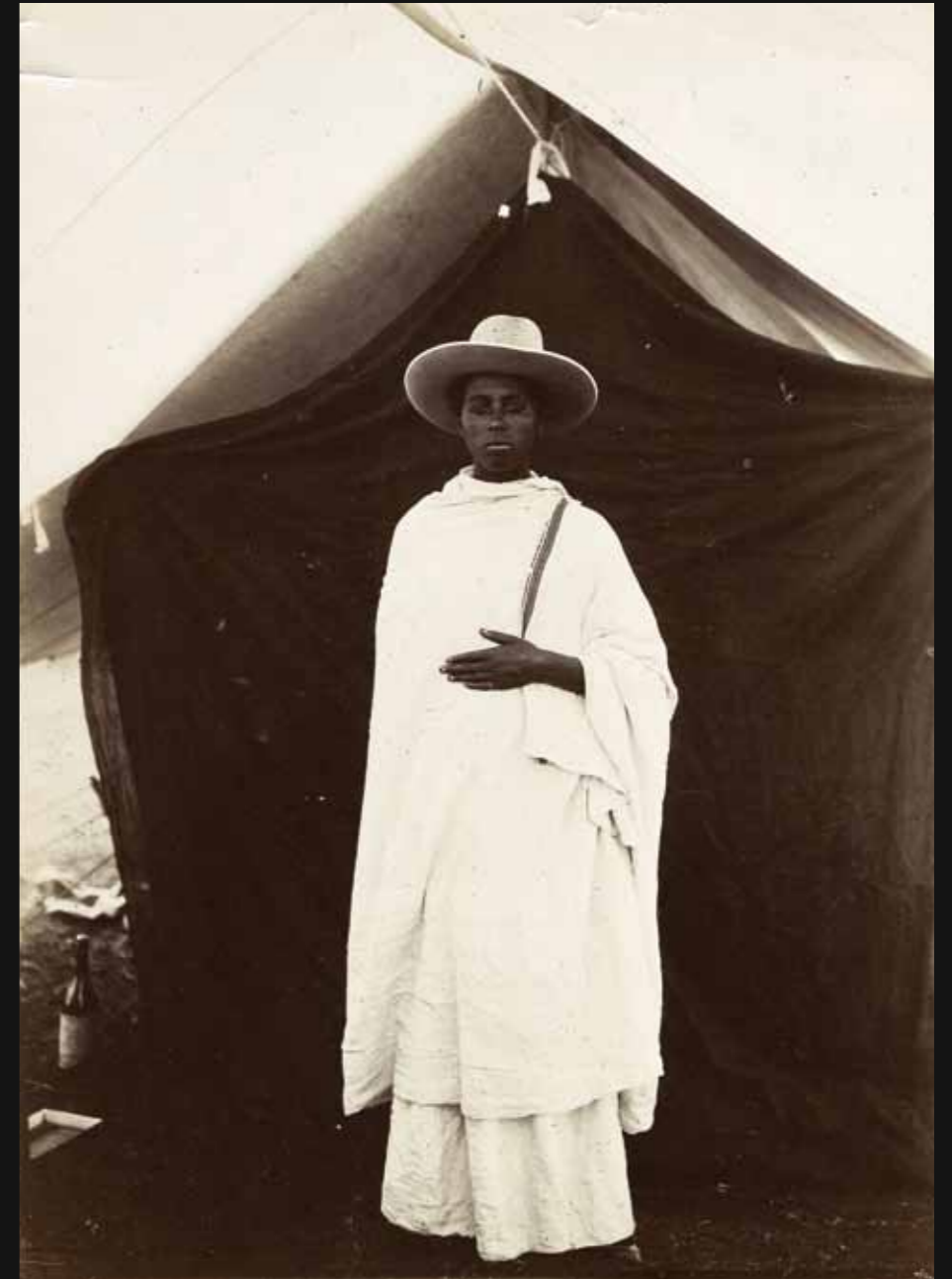
13

**Femme Abyssine**

c. 1910

Title inscribed verso.  
Gelatin silver print  
175 by 128 mm.

From same collection as  
previous image



14

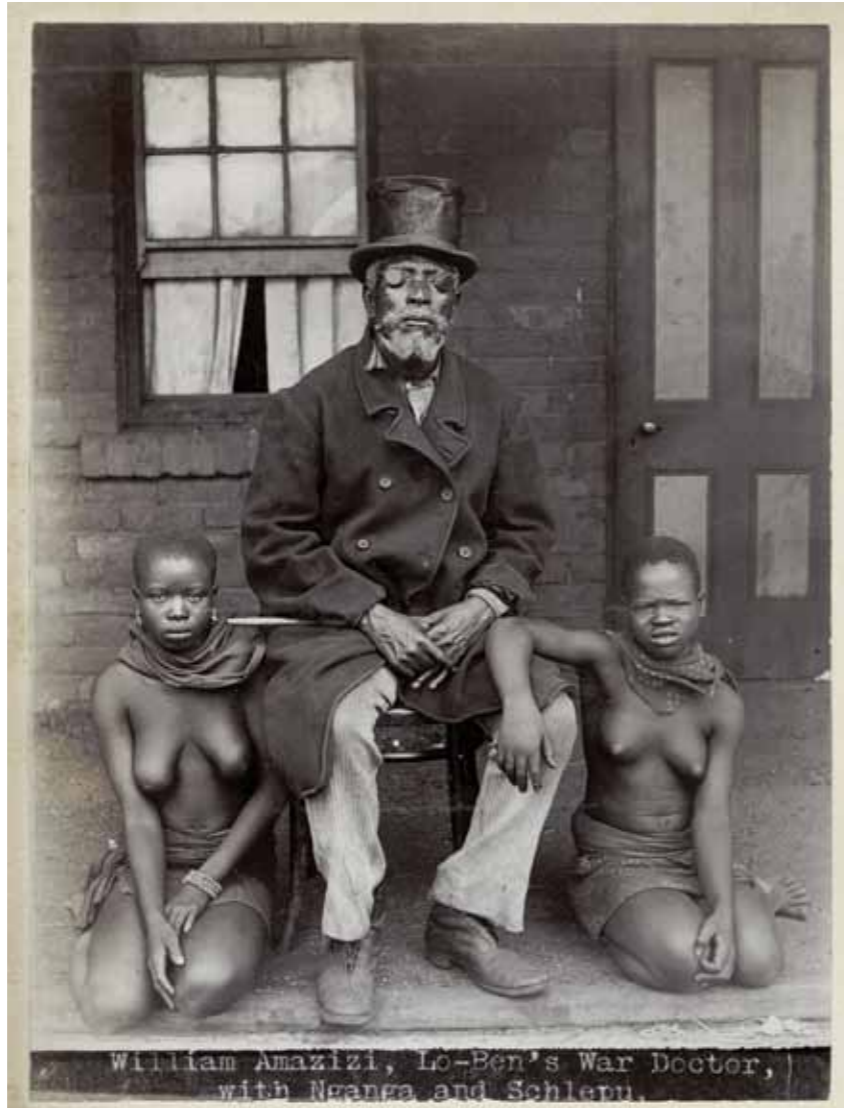
*William Amazizi, Lo-Ben's  
war doctor with Nganga  
and Schlepu*

1890s  
Gelatin silver print  
151 by 112 mm.

15

**Nganga and Schlepu**

1890s  
Gelatin silver print  
149 by 102 mm.



**Women and children**

?South east Africa

c. 1880

Albumen print  
138 by 200 mm.

Shown enlarged



**Family**

?Tanzania  
1890s  
Gelatin silver print  
193 by 149 mm.



18

-

***Manga Bell***

1890s

Title inscribed on mount  
Gelatin silver print  
148 by 102 mm.

-

From a German album, titled  
*S.M.S." Sperber", West Africa,*  
1895/6



19

*König Bell*

**Chief Ndumba Lobe**

1890s

Title inscribed on mount  
Gelatin silver print  
190 by 130 mm.

From same album as previous  
portrait



20

-

**Khama**

c. 1910

Mount with London  
Missionary Society  
stamps

Gelatin silver print  
146 by 107 mm.

21

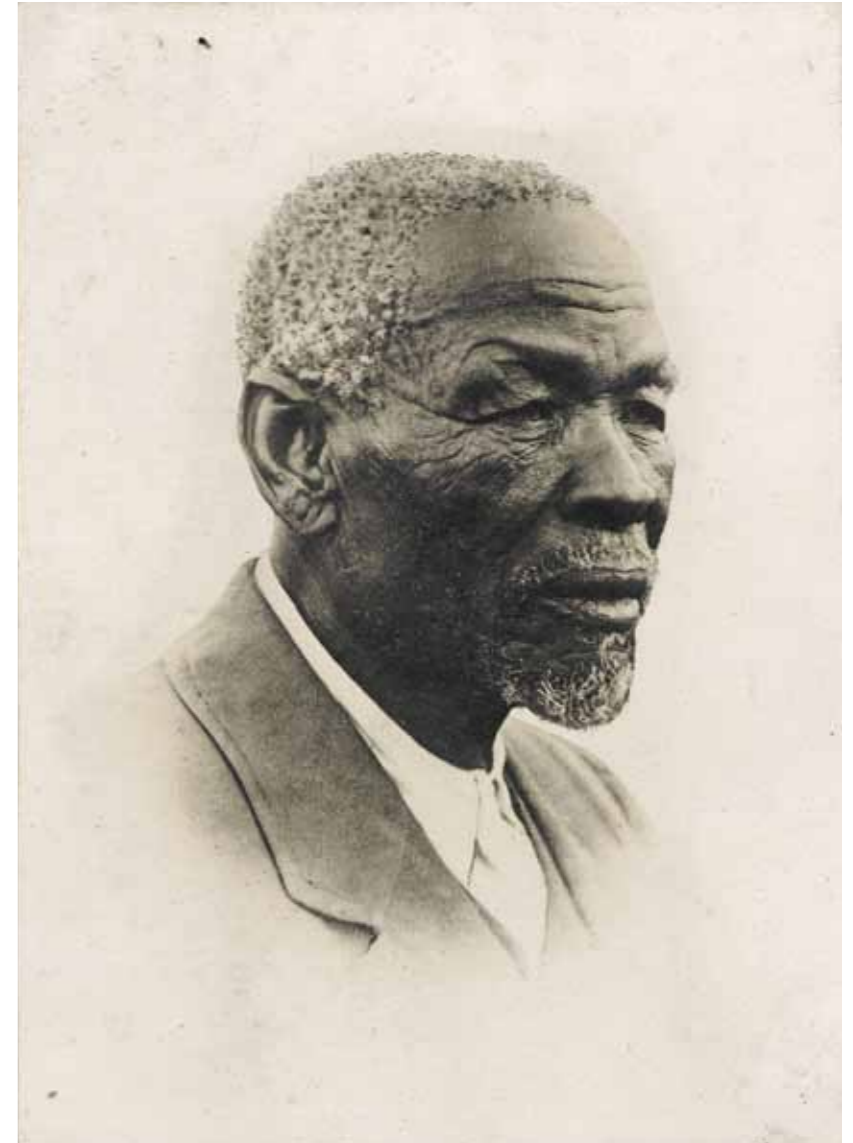
-

**Neville Jones**

***A recent portrait of  
Khama***

1921

Mount with title inscribed  
and with LMS stamp.  
Verso inscribed *Khama,  
shot by Neville Jones  
(1921). Fee 7/6. Return to  
D. Chamberlain C.M.S.* and  
with L.M.S. stamp  
Gelatin silver print  
151 by 109 mm.



22

-

**A. E. Hargreave (?sp.)**

***Sekhome - Khama's son***

c. 1910

Mount inscribed with title.

?Platinum print

165 by 119 mm.

-

From an album *Photographs  
from Phalaptwe and  
the neighbourhood.  
Bechuanaland. South Africa.*



A.E. Hargreave (?sp.)  
*Khama and his wife*  
c. 1910

Title inscribed on mount  
From the same album as  
preceding portrait  
?Platinum print  
165 by 119 mm.



**Basuto Chief's Prime  
Minister**

?1920s

Title typed verso  
Gelatin silver print  
216 by 164 mm.



**Basuto Chief**

?1920s

Title typed verso.  
Gelatin silver print  
215 by 163 mm.

From same collection as  
preceding portrait



26

**F. Rodet**  
***An Ivory-Coast Christian***  
***and his son***

c. 1935

Verso inscribed with title,  
photographer and *The*  
*Kingdom Overseas* stamp  
dated *Aug. 1935*

Gelatin silver print  
161 by 120 mm.





Michael Graham-Stewart  
38 Old Bond St  
London W1S 4QW  
m@mgsart.net  
+ 44 207 495 4001

27

***Khama, Sekhomo***

c. 1920

Verso inscribed with title  
and *whom succeeds him as  
chief*. L.M.S. stamps  
Gelatin silver print  
107 by 81 mm.

**Design**

Hannah Lawless

**Post production**

sjoerd@digisense.co.nz

**Thanks to**

Pierre Spake, Michael  
Stevenson, Linus Carr,  
Serge Kakou, Greg Pos,  
Jenny Allsworth, Sven  
Gahlin, Christoph Rippe,  
Paul Jenkins, Chris Geary,  
Juerg Schneider, Helen  
Beastall, Arnaud Delas,  
Richard Valencia,  
Paul Frecker and  
Richard Meara



MICHAEL  
GRAHAM-  
STEWART